

CATERPILLAR

12

D315, D315G
 Crawler Tractor D4
 Motor Grader No. 112
 Diesel Electric Set D315
 Traxcavator 955
 Marine Engine D315
 350 cu. inch, 5.73 l

In-Line 4 Cyl.
 4.5" x 5.5"
 114,30 x 139,70



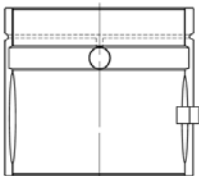
BE/PL	4	76,175 / 76,200	84,531 / 84,557	38,000	4,126	1466 05 0	STD	0546 P04 0	STD
						1466 05 0	.010"	0546 P04 0	.010"
						1466 05 0	.020"	0546 P04 0	.020"
						1466 05 0	.025"	0546 P04 0	.025"
						1466 05 0	.030"	0546 P04 0	.030"
						1466 05 0	.040"	0546 P04 0	.040"
						1466 05 0	.050"	0546 P04 0	.050"
						1466 05 0	.060"	0546 P04 0	.060"
1. MB/HL	1	88,875 / 88,900	107,942 / 107,963	50,800	9,450	0747 07 0	STD	0547 H05 0	STD
						0747 07 0	.010"	0547 H05 0	.010"
						0747 07 0	.020"	0547 H05 0	.020"
						0747 07 0	.025"	0547 H05 0	.025"
						0747 07 0	.030"	0547 H05 0	.030"
						0747 07 0	.040"	0547 H05 0	.040"
						0747 07 0	.050"	0547 H05 0	.050"
						0747 07 0	.060"	0547 H05 0	.060"
2.4. MB/HL	2	88,875 / 88,900	107,942 / 107,963	38,100	9,450	0750 07 0	STD		
						0750 07 0	.010"		
						0750 07 0	.020"		
						0750 07 0	.025"		
						0750 07 0	.030"		
						0750 07 0	.040"		
						0750 07 0	.050"		
						0750 07 0	.060"		
3. FB/FL	1	88,875 / 88,900	107,942 / 107,963	69,500	9,450	0748 07 0	STD		
						0748 07 0	.010"		
						0748 07 0	.020"		
						0748 07 0	.025"		
						0748 07 0	.030"		
						0748 07 0	.040"		
						0748 07 0	.050"		
						0748 07 0	.060"		
5. MB/HL	1	88,875 / 88,900	107,942 / 107,963	90,600	9,450	0749 07 0	STD		
						0749 07 0	.010"		
						0749 07 0	.020"		
						0749 07 0	.025"		
						0749 07 0	.030"		
						0749 07 0	.040"		
						0749 07 0	.050"		
						0749 07 0	.060"		



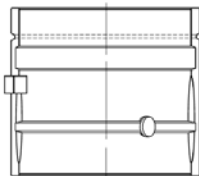
1. MB/HL	1	88,875 / 88,900	98,913 / 98,933	46,150	4,953	1467 05 0	STD	0706 H05 0	STD
						1467 05 0	.010"	0706 H05 0	.010"
						1467 05 0	.020"	0706 H05 0	.020"
						1467 05 0	.025"	0706 H05 0	.025"
						1467 05 0	.030"	0706 H05 0	.030"
						1467 05 0	.040"	0706 H05 0	.040"
						1467 05 0	.050"	0706 H05 0	.050"
						1467 05 0	.060"	0706 H05 0	.060"
2.4. MB/HL	2	88,875 / 88,900	98,913 / 98,933	36,500	4,953	1471 05 0	STD		
						1471 05 0	.010"		
						1471 05 0	.020"		
						1471 05 0	.025"		
						1471 05 0	.030"		
						1471 05 0	.040"		
						1471 05 0	.050"		
						1471 05 0	.060"		
3. FB/FL	1	88,875 / 88,900	98,913 / 98,933	69,600	4,953	1468 05 0	STD		
						1468 05 0	.010"		
						1468 05 0	.020"		
						1468 05 0	.025"		
						1468 05 0	.030"		
						1468 05 0	.040"		
						1468 05 0	.050"		
						1468 05 0	.060"		
5. MB/HL	1	88,875 / 88,900	98,913 / 98,933	85,800	4,953	1469 05 0	STD		
						1469 05 0	.010"		
						1469 05 0	.020"		
						1469 05 0	.025"		
						1469 05 0	.030"		
						1469 05 0	.040"		
						1469 05 0	.050"		
						1469 05 0	.060"		

1469 05 0

lower



upper



CATERPILLAR

13

D318
 Crawler Tractor D6
 Wheel Tractor DW 10
 Motor Grader No. 12
 Diesel Electric Set D318
 Traxcavator 977
 Marine Engine D318
 Trax. Loader No. 6
 525 cu. inch, 8.6 l

In-Line 6 Cyl.
 4.5" x 5.5"
 114,30 x 139,70



BE/PL	6	76,175 / 76,200	84,531 / 84,557	38,000	4,126	1466 05 0	STD	0546 P06 0	STD
						1466 05 0	.010"	0546 P06 0	.010"
						1466 05 0	.020"	0546 P06 0	.020"
						1466 05 0	.025"	0546 P06 0	.025"
						1466 05 0	.030"	0546 P06 0	.030"
						1466 05 0	.040"	0546 P06 0	.040"
						1466 05 0	.050"	0546 P06 0	.050"
						1466 05 0	.060"	0546 P06 0	.060"
1. MB/HL	1	88,875 / 88,900	107,942 / 107,963	50,800	9,450	0747 07 0	STD	0547 H07 0	STD
						0747 07 0	.010"	0547 H07 0	.010"
						0747 07 0	.020"	0547 H07 0	.020"
						0747 07 0	.025"	0547 H07 0	.025"
						0747 07 0	.030"	0547 H07 0	.030"
						0747 07 0	.040"	0547 H07 0	.040"
						0747 07 0	.050"	0547 H07 0	.050"
						0747 07 0	.060"	0547 H07 0	.060"
2.3.5.6. MB/HL	4	88,875 / 88,900	107,942 / 107,963	38,100	9,450	0750 07 0	STD		
						0750 07 0	.010"		
						0750 07 0	.020"		
						0750 07 0	.025"		
						0750 07 0	.030"		
						0750 07 0	.040"		
						0750 07 0	.050"		
						0750 07 0	.060"		
4. FB/FL	1	88,875 / 88,900	107,942 / 107,963	69,500	9,450	0748 07 0	STD		
						0748 07 0	.010"		
						0748 07 0	.020"		
						0748 07 0	.025"		
						0748 07 0	.030"		
						0748 07 0	.040"		
						0748 07 0	.050"		
						0748 07 0	.060"		
7. MB/HL	1	88,875 / 88,900	107,942 / 107,963	90,600	9,450	0749 07 0	STD		
						0749 07 0	.010"		
						0749 07 0	.020"		
						0749 07 0	.025"		
						0749 07 0	.030"		
						0749 07 0	.040"		
						0749 07 0	.050"		
						0749 07 0	.060"		

14

D318, D318G
 Crawler Tractor D6
 Wheel Tractor DW10
 Motor Grader No. 12
 Traxcavator 977
 Trax. Loader No. 6
 Diesel Electric Set D318
 Marine Engine D318
 525 cu. inch, 8.6 l

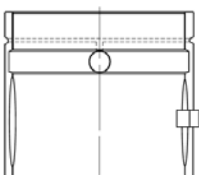
In-Line 6 Cyl.
 4.5" x 5.5"
 114,30 x 139,70



BE/PL	6	76,175 / 76,200	84,531 / 84,557	38,000	4,126	1466 05 0	STD	0546 P06 0	STD
						1466 05 0	.010"	0546 P06 0	.010"
						1466 05 0	.020"	0546 P06 0	.020"
						1466 05 0	.025"	0546 P06 0	.025"
						1466 05 0	.030"	0546 P06 0	.030"
						1466 05 0	.040"	0546 P06 0	.040"
						1466 05 0	.050"	0546 P06 0	.050"
						1466 05 0	.060"	0546 P06 0	.060"
1. MB/HL	1	88,875 / 88,900	98,913 / 98,933	46,150	4,953	1467 05 0	STD	0706 H07 0	STD
						1467 05 0	.010"	0706 H07 0	.010"
						1467 05 0	.020"	0706 H07 0	.020"
						1467 05 0	.025"	0706 H07 0	.025"
						1467 05 0	.030"	0706 H07 0	.030"
						1467 05 0	.040"	0706 H07 0	.040"
						1467 05 0	.050"	0706 H07 0	.050"
						1467 05 0	.060"	0706 H07 0	.060"
2.3.5.6. MB/HL	4	88,875 / 88,900	98,913 / 98,933	36,500	4,953	1471 05 0	STD		
						1471 05 0	.010"		
						1471 05 0	.020"		
						1471 05 0	.025"		
						1471 05 0	.030"		
						1471 05 0	.040"		
						1471 05 0	.050"		
						1471 05 0	.060"		
4. FB/FL	1	88,875 / 88,900	98,913 / 98,933	69,500	4,953	1468 05 0	STD		
						1468 05 0	.010"		
						1468 05 0	.020"		
						1468 05 0	.025"		
						1468 05 0	.030"		
						1468 05 0	.040"		
						1468 05 0	.050"		
						1468 05 0	.060"		
7. MB/HL	1	88,875 / 88,900	98,913 / 98,933	85,800	4,953	1469 05 0	STD		
						1469 05 0	.010"		
						1469 05 0	.020"		
						1469 05 0	.025"		
						1469 05 0	.030"		
						1469 05 0	.040"		
						1469 05 0	.050"		
						1469 05 0	.060"		

1469 05 0

lower



upper

